

MAJORITY

B O W F E L L

COMPACT BLUETOOTH SOUNDBAR

BOW-BAR-BLK



Instructions Guide

Controls And Functions.....	1
What's In The Box?.....	3
Mode Indicator Lights	4
Using the USB Input	4
Using the Optical Input.....	5
Using the RCA Input	6
Using the MP3 LINK Connection (Line In).....	7
Connecting to the Mains Supply.....	8
Bluetooth Operation	9
Troubleshooting.....	10
Specifications	11
Warranty.....	11
Safety Information.....	12

3

**YEAR
WARRANTY**

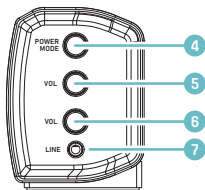
Register your product online for a FREE 3 year
extended warranty at: www.majority.co.uk

Front View/LED Indicator Light



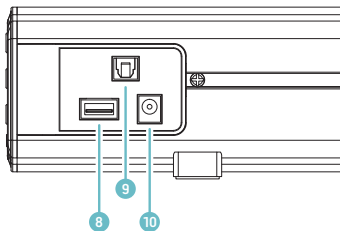
1. Speaker Drivers
2. Remote Control Sensor
3. LED Indicator Light

Side View: Buttons



4. Press and hold for 3 seconds to switch the unit on/off. Press to switch between Bluetooth, USB, LINE in or OPTICAL in.
5. Volume increase
6. Volume decrease
7. 3.5mm stereo LINE in

Rear View: Panel Interface Connection

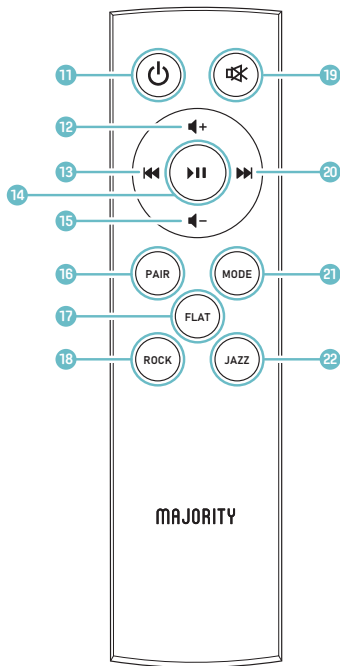


8. USB Socket
9. OPTICAL In Socket
10. DC 12V 1.5A Socket

Automatic Power Off Function

The Majority Bowfell will automatically go to standby mode after 180 minutes if the connected TV is switched off.

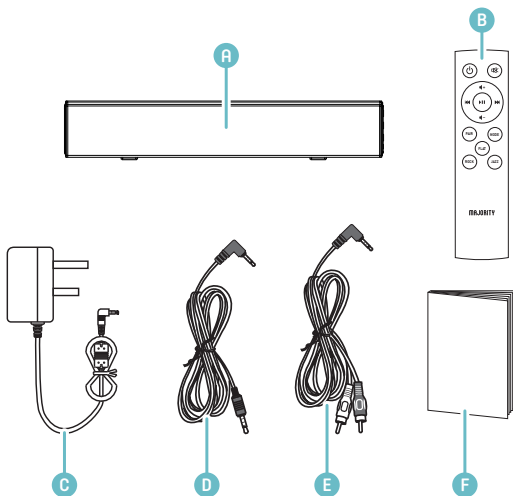
Remote Control



11. **Power On/Off**
12. **Volume +:** Increase volume.
13. **Back step:** Use in Bluetooth and USB modes to go back a track.
14. **Play/Pause:** In Bluetooth/USB mode, press to pause/play media.
15. **Volume -:** Decrease volume
16. **PAIR:** In Bluetooth mode, press to pair with your device. Press again to disconnect.
17. **FLAT:** Restore default sound settings.
18. **ROCK:** Set the ROCK mode sound effect.
19. **MUTE:** Mute/unmute sound.
20. **Forward Step:** Use in Bluetooth/USB mode to go forward a track.
21. **MODE:** Switch modes.
22. **JAZZ:** Set the JAZZ mode sound effect.

Box Contents

- A. Majority Bowfell Soundbar
- B. Remote Control
- C. Adapter
- D. 3.5mm to 3.5mm Audio cable
- E. 3.5mm to RCA Audio Cable
- F. Instructions Guide

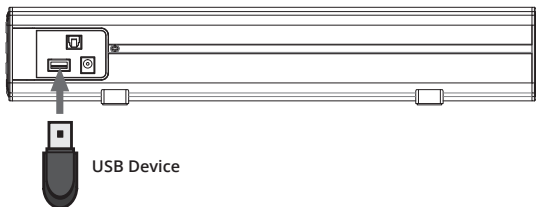


Mode Indicator Lights

State	Indicator Lights
Power off	Red
Optical mode	Orange
USB mode	Light Blue
Line in mode	Green
Bluetooth ready	Flashing blue
Bluetooth connected	Blue

Using the USB Input

1. Connect your USB device to the USB jack (**Ref.8**) on the soundbar.
2. Press the "MODE" button (**Ref.21**) on the remote, and the LED indicator will be LIGHT BLUE.
3. Play music files from the USB device through the soundbar.



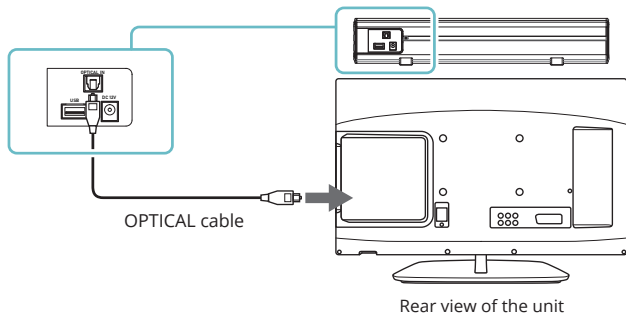
Using the Optical Input

You will need: An audio source with an Optical Audio Output and a Digital Optical Audio cable (not included).

Connect the Optical cable to the soundbar (Ref.9).

Press the OPTICAL button on the remote control or on the main unit (Ref.4/Ref.11) to switch to Optical mode. The mode indicator LED will turn ORANGE.

Using the native controls on your connected device, ensure the audio settings are set to PCM or Optical Audio.



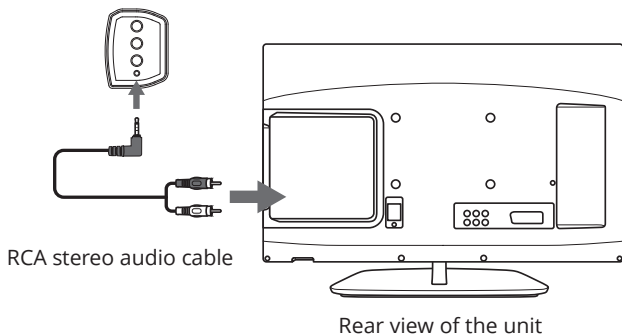
Using the RCA Input

You will need: An audio source with an RCA Output and an RCA cable (included).

Connect the RCA cable to the RCA output on the audio source and to the Line in (AUX2) on the speaker bar (**Ref.7**).

Press the POWER/MODE button on the remote control or the main unit (**Ref.4/Ref.11**) to select LINE IN mode. The mode indicator LED will turn GREEN.

Using the native controls on your connected device, make sure the audio settings are set to Analog stereo output/RCA/Audio output.



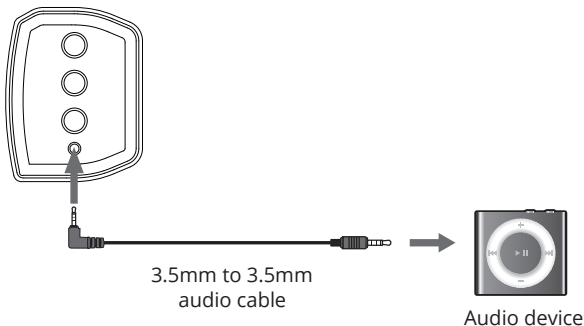
Using the MP3 LINK Connection (Line In)

Plug one end of a 3.5mm audio input cable (included) into the Line in on the unit (**Ref.7**).

Plug the other end of the cable into the audio output/headphone output on your MP3 player or other audio source.

Press the **POWER/MODE** button (**Ref.4/Ref.11**) repeatedly to enter **LINE** in mode. The mode indicator will turn **GREEN**.

Side view of the unit



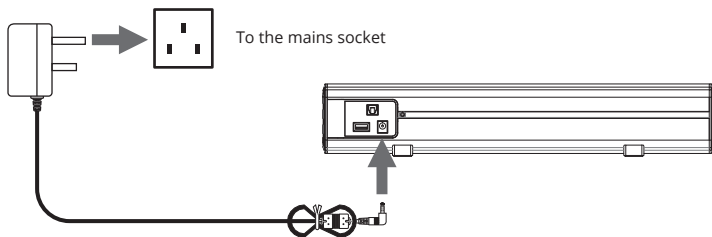
Connecting to the Mains Supply

Ensure that the power supply voltage is within the range of 100V~240V. Any other voltage may cause damage to the unit.

Unwind the mains cable to its full length. Connect the mains plug to a mains socket. Ensure that the mains plug is fully inserted into the mains socket.

The mains plug/appliance coupler is used as the disconnect device. The disconnect device must remain readily operable.

Connect the Adapter to the unit and AC Socket (Ref.10).



Ensure all audio connections of the unit are connected before connecting to the mains power socket.

Unplug the power cord from the outlet when the unit is not in use for an extended period of time.

Bluetooth Operation

Pairing a Bluetooth Device for the First Time

Select and press the MODE directly on the remote control (**Ref.21**) or on the soundbar (**Ref.4**) until Bluetooth mode is selected, indicated by a flashing blue light.

Using the native controls on your Bluetooth device, select the “Majority Bowfell” when prompted to choose a Bluetooth device.

If your device requests a password, enter the default “0000”. If you encounter issues at this stage, please refer to the user manual for your Bluetooth device for instructions on pairing and connecting Bluetooth devices.

When successfully paired and connected, a beep will issue from the unit and the Pairing Indicator will display a solid blue light. After initial pairing, the unit will stay paired unless unpaired manually by the user, or until the device is reset.

To unpair, hold down the PAIR button for 3 seconds. You can now pair the device with another Bluetooth device.

If your device should become unpaired or you find it is unable to connect, repeat the steps above.

If you encounter an issue with your soundbar, please refer to the following checklist.

Observation	Potential Cause/Solution
No power/function	Check that the power is switched on at the wall. Check whether the power adaptor is properly connected to power outlet.
No sound	Check whether unit is set to MUTE. Check whether MODE is correctly selected. Check whether cables are properly installed.
No sound from Bluetooth connection	Check whether you have pressed PAIR button before pairing. Check whether external device requires password "0000".
Function disturbance	Switch off and unplug the unit. Leave it for 2 minutes and switch it on again. If a particular mode is causing problems, please try an alternative connection such as Optical, AUX or Bluetooth.
Remote control function issues	Check whether the battery needs replacing. Replace if necessary. Check whether there are obstacles blocking the remote sensor.
No sound when connection and switches to OPTICAL IN mode	Check and ensure the audio setting of the input source (e.g. TV, games console, DVD player, etc.) is set to PCM mode while using digital connection (such as Optical, HDMI and COAXIAL).

Specifications

Power Supply	DC 12V 1.5A
Frequency Response	30Hz-20KHz
SNR	70dB
Separation	45dB
Bluetooth	V5.0
Dimension (WxHxD)	38.8 x 5.4 x 7.2 cm
Net Weight	1.5kg

Support

If you require further assistance with your new soundbar, please contact our support team on the Majority website:

www.majority.co.uk/support

Warranty

All products come with a standard 12 month warranty. All items must be registered on www.majority.co.uk for the warranty to be valid. Once on the web page, use the menu to find "Register Your Product". You will also be given the chance to extend your warranty for an additional 24 months, free of charge.

1. Read these instructions.
2. Keep these instructions. Instructions are also available for download at www.majorityradios.co.uk
3. Heed all warnings
4. Follow all instructions
5. Do not clean the apparatus near or with water
6. Do not block any ventilation openings. Install in accordance with the manufacturer's instructions
7. Do not install near any heat sources such as radiators, heat registers, stoves, or other apparatus (including amplifiers) that produce heat.
8. Protect the power from being walked on or pinched particularly at plugs, convenience receptacles, and the point where they exit from the apparatus.
9. Only use attachments/accessories specified by the manufacturer.
10. Unplug this apparatus during light storms or when unused for long periods of time.
11. Refer all servicing to qualified service personnel.
Servicing is required when the apparatus has been damaged in a way, such as power-supply cord or plug is damaged, liquid has been spilled or objects have fallen into the apparatus, the apparatus has been exposed to the rain or moisture, does not operate normally or has been dropped.
12. No naked flame sources, such as lit candles, should be placed on the apparatus.
13. Dispose of used electrical products and batteries safely according to your local authority and regulations.


ADDITIONAL WARNINGS

The apparatus shall not be exposed to dripping or splashing and no objects filled with liquid, such as vases, shall be placed on the apparatus. Main plug is used to disconnect device and it should remain readily operable during intended use. In order to disconnect the apparatus from the main mains completely, the mains plug should be disconnected from the main socket outlet completely. Battery shall not be exposed to excessive heat such as sunshine, fire or the like.

RECYCLING ELECTRICAL PRODUCTS



You should now recycle your waste electrical goods and in doing so help the environment.

 This symbol means an electrical product should not be disposed of with normal household waste. Please ensure it is taken to a suitable facility for disposal when finished with.



IMPORTANT: Please read all instructions carefully before use and keep for future reference.



Risk of electric shock.
Do not open



Read all instructions carefully before use and keep for future reference

When servicing, use only identical replacement parts



CAUTION

RISK OF ELECTRIC SHOCK
DO NOT OPEN



ATTENTION

RISQUE D'ELECTROCUTION
NE PAS OUVRIR



IMPORTANT: Please read all instructions carefully before use and keep for future reference

MAJORITY

www.majority.co.uk